

RIMEX

Building better wheels

Two-Piece Lock Rings

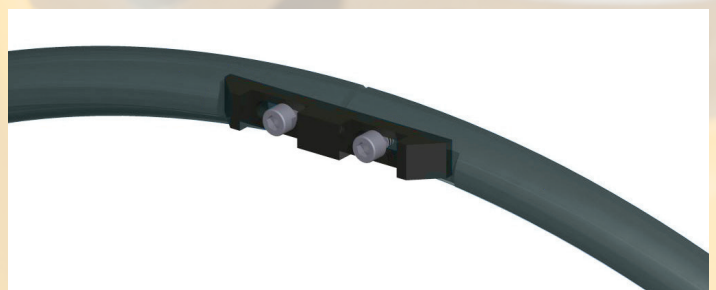
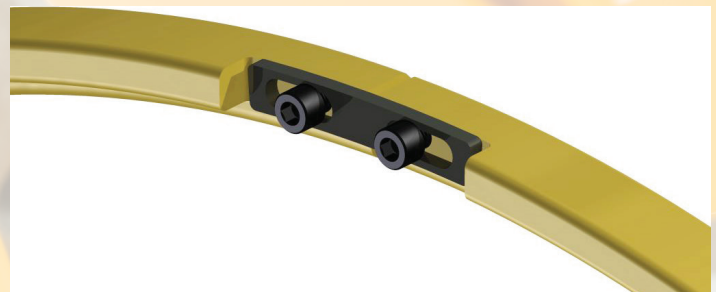
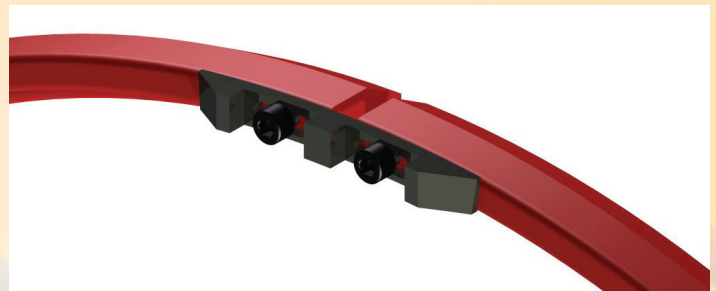
RIMEX two-piece lock rings are manufactured to the highest standards using only high-quality steel.

Safety benefits of RIMEX two-piece lock rings:

- Pinch points and unreleased tension, eliminated
- Lock ring sections are lighter, easier to handle, install and secure in place
- The sections are bolted together with retaining clamps ensuring they remain secured in place
- Easy to store

Currently, RIMEX produces 2 piece lock rings for DGS/IGLR wheel styles in the following sizes and profiles (49-33 EMH; 63-49 HDT/TSR/MST):

| SIZE | PROFILE | RETAINER KIT |
|------|-----------|---|
| 63" | HDT - 930 | 780-000-0108 |
| | HDT - 797 | 780-000-0108 |
| | TSR | 780-000-0108 |
| | MST | 780-000-0108 |
| 57" | HDT | 780-000-0108 |
| | TSR | 780-000-0068 [special] |
| | TSR | 780-000-0108 |
| 51" | TSR | 780-000-0108 780-000-0068 [special] |
| 51" | HDT | 780-000-0108 |
| 49" | HDT | 780-000-0108 |
| 49" | EMH | 780-000-0120 |
| 35" | EMH | 780-000-0120 |



RIMEX

TWO-PIECE LOCK RINGS

2PLR_V1_0217

Contact your local branch for more information: www.RIMEX.com/locations