

# RIMEX

*Building better wheels*

## Bead Breakers

Designed to prevent the tool from 'kicking out' and causing injury, RIMEX produces the strongest, safest, most stable Bead Breaker in the industry. RIMEX Bead Breakers will break even the most stubborn earthmover tire bead. The solid grip and rigidity provided by the custom jaws breaks the tire bead from the back section or bead band of the rim without damaging the tire or rim components.

### 15 ton Bead Breaker Single Jaw Design

**P/N 785-000-0001 (50 lbs)**

The single hook design breaks the tire bead from a solid back section or flange without damaging the tire.

The custom made Universal Jaw, P/N 785-000-0068, contains two removable lower jaws:

- ① P/N 785-000-0066 *pictured right*
- ② P/N 785-000-0067 *pictured right*

The Universal Jaw is supplied with each tool and allows the Bead Breakers to be used in numerous wheel applications.

Please refer to the **RIMEX 15 ton Bead Breaker Instruction Manual** for operation and safety instructions.



### 25 ton Bead Breaker Dual Jaw Design

**P/N 785-000-0045 - 6" stroke (51.1 lbs)**

**P/N 785-000-0061 - 10" stroke (67 lbs)**

The dual jaw design of the 25 ton Bead Breaker gives the tool more power when required.

The custom made Universal Jaw, P/N 785-000-0068, contains two removable lower jaws:

- ① P/N 785-000-0066 *pictured left*
- ② P/N 785-000-0067 *pictured left*

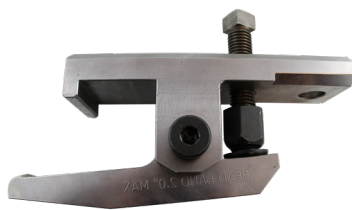
The Universal Jaw is supplied with each tool and allows the Bead Breakers to be used in numerous wheel applications.

Please refer to the **RIMEX 25 ton Bead Breaker Instruction Manual** for operation and safety instructions.

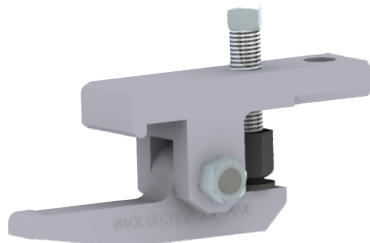


15 Ton Bead Breaker Single Jaw Design

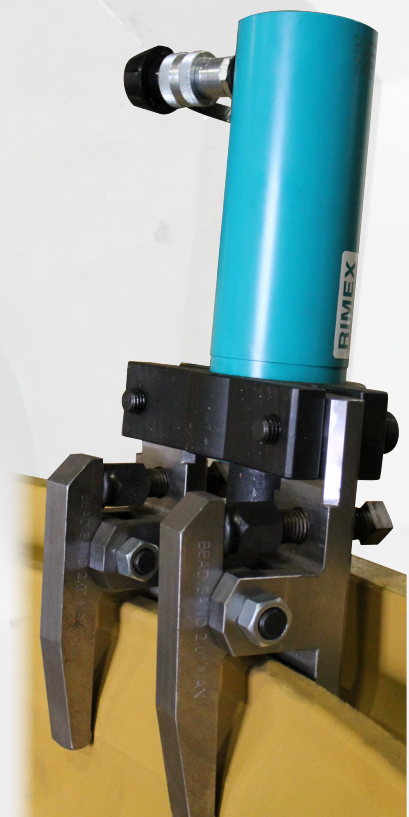
### Optional Jaws (sold separately)



**P/N 785-000-0070**  
Bead Breaker, Assy, Sur-Loc



**P/N 785-000-0072**  
Bead Breaker, Assy, Bead Band



25 Ton Bead Breaker Dual Jaw Design

Contact your local branch for more information: [RIMEX.com/company/locations](http://RIMEX.com/company/locations)